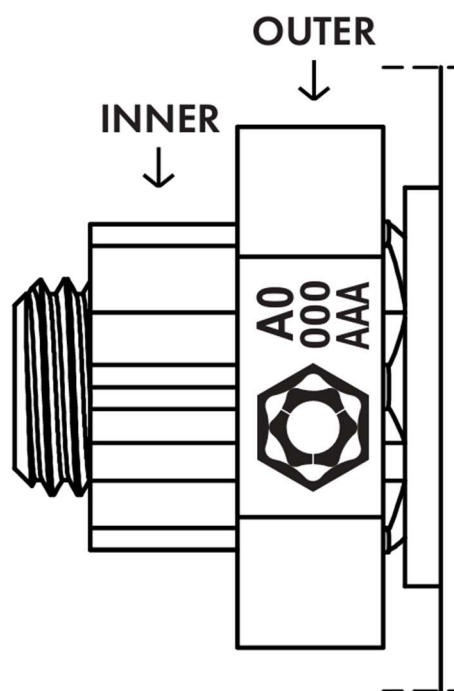


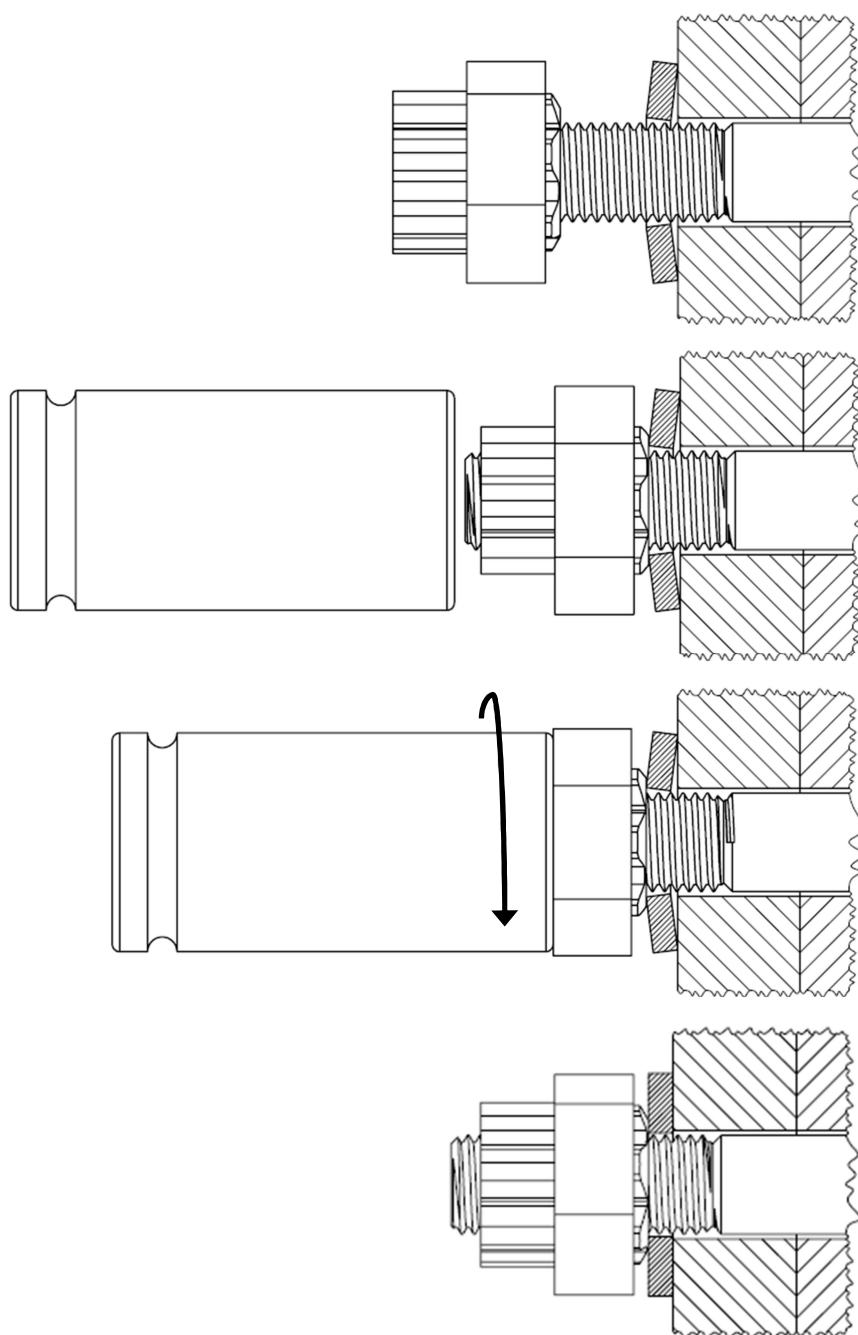
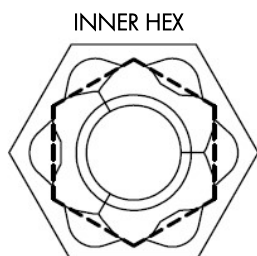
1 IMPORTANT INFORMATION

- ALWAYS INSTALL SEGNUT WITH WASHER.
- CHECK BOLT THREAD IS VISIBLE PAST NUT.
- TIGHTEN/LOOSEN USING INNER HEX.
- TIGHTEN FIRMLY WITH HAND TOOL FIRST IF USING A RATTLEGUN.
- RELEASE USING OUTER SLEEVE. SEGMENTS CAN THEN BE KNOCKED FREE WITH HAMMER/ RATTLEGUN. ENSURE EYE PROTECTION AND OTHER PPE IS WORN DURING RELEASE PROCESS.



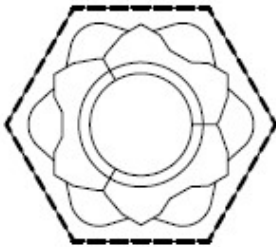
2 INSTALLATION

Tighten/loosen via the INNER HEX of the Segnut, also known as the Inner Segments. Tightening with an impact wrench can cause the release of the outer sleeve during installation – whilst this does not have any effect on the bolted joint, it will require another Segnut nut to be installed. If using an impact wrench, first manually tighten to a snug fit, with the full effort of a person using a spanner, to develop tension in the bolt and help prevent disassembly.

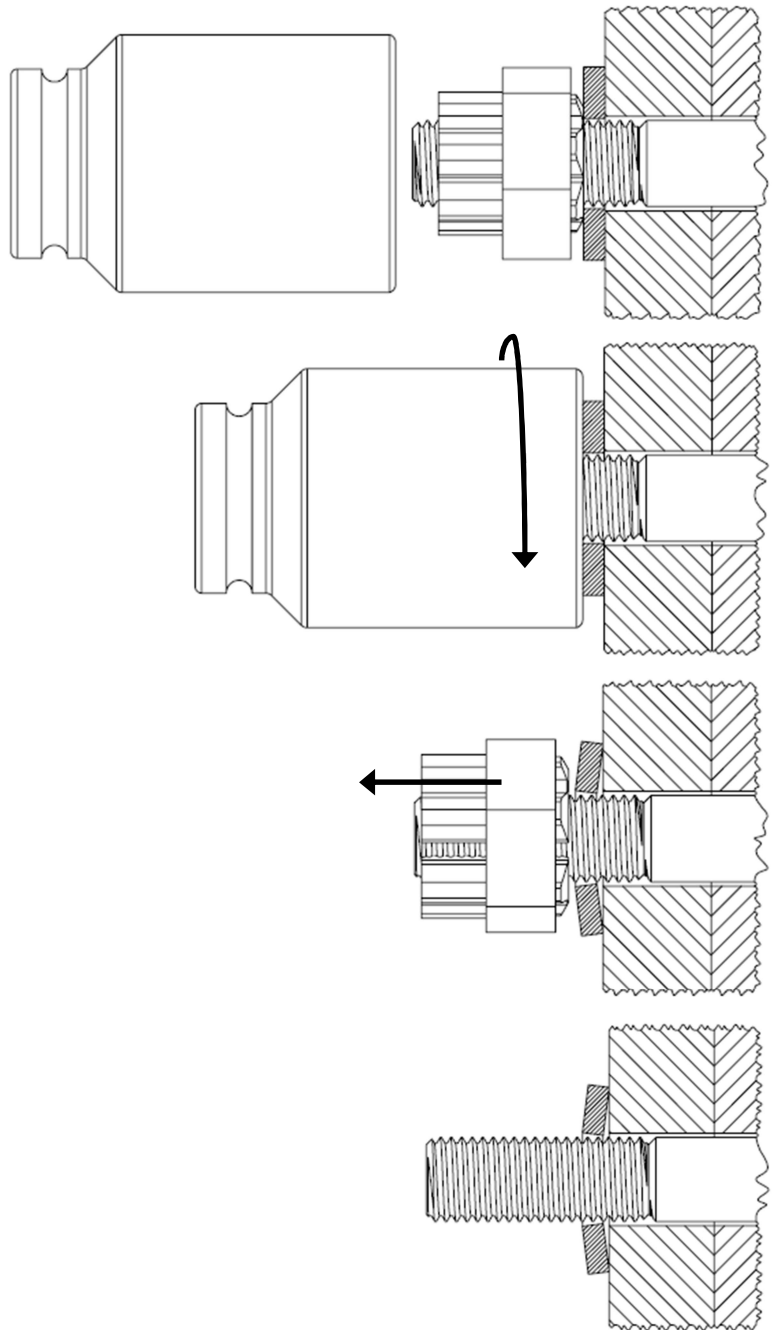
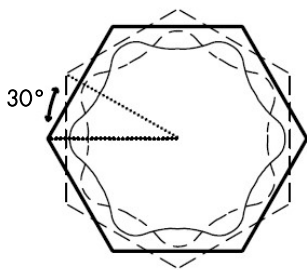


3 RELEASE

Release the Segnut via the OUTER SLEEVE. Note that the Segnut can be loosened off via the INNER HEX if the thread is not seized – like a standard nut.



OUTER SLEEVE



There are cases whereby the sleeve is released from the segments but due to embedding, wear, or similar, some/all Segnut segments remain on the bolt thread. Note that there can still be tension in the bolt, resulting in segments being ejected. Ensure appropriate PPE is worn, and where possible, leave the sleeve loosely on the Segnuts to contain them when they are knocked free.

- 1) Use a slightly oversized socket on the INNER HEX and rotate in the loosening direction. Impact wrenches are good at knocking the segments free. The socket will contain the segments preventing any ejection. Or
- 2) Use a hammer to knock the segments off.

